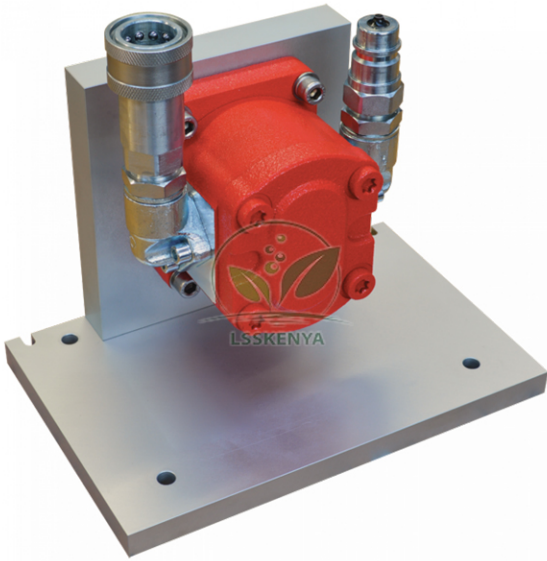


**Product Code . LSK-FM-10481**

## **Gear Pump**



### **Description**

The gear rotation generally determines the flow direction, but you only test the pump in one direction, determined by the Universal Dynamometer.

The gear pump is a positive displacement pump. It has double gears that deliver a given volume of fluid (oil) for each full rotation of the pump shaft.

Self-sealing connections reduce oil spillage and simplify installing the pump to the pump module.